

# Conservation News

Union Soil & Water Conservation District  
18000 State Route 4, Suite D  
Marysville, OH 43040

Phone: (937) 642-5871 ext. 4

[www.unioncountyohio.gov/USWCD](http://www.unioncountyohio.gov/USWCD)

## USWCD Supervisors

Rick Weigand, Chair

Andy Clarridge,  
Vice Chair

Cheryl Trivisonno,  
Fiscal Officer & Treasurer

Larry Morris, Secretary

Randy Trapp, Member

## USWCD Personnel

Brent Nickel, DA/ Wildlife

Sherry Maisenbacher, AA

Mark Watkins, District Tech

Matt Williams, District Tech

Ross Cater, District Tech

Emma Scott, Urban Tech

Joe Eads, DM Supervisor

Cody Beery, DM Tech

Matt Archer, DM Tech

## USDA/NRCS Personnel

Ron Nieman, DC

Adam Slappy, Soil Con

Mariah Lashley, Soil Con

Sierah Geldbaugh, Soil Con

LaRae Baker, Training Coor.

Brent Smith, ACES

## Pheasants Forever

Riley Porter,  
Wildlife Biologist II

## 2026 Union SWCD Annual Tree Sale to be held on April 18!

The sale will be held at 18000 ST RT 4  
from 9:00 a.m. until noon, or until **SOLD OUT**  
in the Union County Agricultural Center parking lot and will be  
conducted as a drive-through.

**Trees are available on a first-come, first-serve basis.  
We reserve the right to limit individual quantities.**

Cash and checks are accepted. Due supply running  
out wait until time of purchase to write your checks.

**Evergreens will be sold in packets of 25 for \$40/pkt.**  
Canaan Fir, White Pine, and White Spruce

**Hardwood and Shrub species excluding the American  
Chestnut will be sold in packets of 5 for \$15/pkt.**

American Plum, Bald Cypress, Black Cherry,  
Blackhaw Viburnum, Paper Birch, Shadblow Serviceberry,  
Sugar Maple, and Swamp White Oak

**American Chestnut will be sold in packets of 5 for \$40/pkt.**

The order form and species description are included in this  
newsletter. For the most up-to-date order form and species  
description and sale information, click on the link below.

[www.unioncountyohio.gov/departments/USWCD/tree-sale](http://www.unioncountyohio.gov/departments/USWCD/tree-sale)

USWCD is taking orders for the spring  
**Tilapia Sale through May 15, 2026.**

Order form available in this edition.

[www.unioncountyohio.gov/departments/USWCD/ucswcd-fish-sale](http://www.unioncountyohio.gov/departments/USWCD/ucswcd-fish-sale)

# 2026 UNION SWCD TREE AND SHRUB SALE

Sale date will be Saturday, April 18, 2026

The sale will be held at the Union County Agricultural Center's Ditch Maintenance Building  
in the rear parking lot at 18000 St. Rt. 4, Marysville, Ohio. The sale starts at  
**9:00 a.m. to Noon or until SOLD OUT**

Any remaining seedlings will be sold the following week, Monday-Friday, 8:00 a.m.-4:30 p.m.

**No pre-orders; seedlings sell on a first-come, first-serve basis.**

Please make the selections below and bring the completed form with you on the day of the sale. After ensuring the desired species are available, a district staff member will total your order at the sale.

We accept Cash and Checks only as payment, no credit cards. Make Checks Payable to: **Union SWCD**

## EVERGREENS

# Packets	<u>25/pkt. (cost + tax)</u>	<u>Species</u>	<u>Size</u>	<u>Age</u>	<u>Sub-Total</u>
_____	\$40/pkt. (\$37.38 + \$2.62)☒	Canaan Fir	8-16"	P+1	_____
_____	\$40/pkt. (\$37.38 + \$2.62)☒	White Pine	8-12"	2 - 1	_____
_____	\$40/pkt. (\$37.38 + \$2.62)☒	White Spruce	10-18"	2 - 0	_____

## HARDWOOD and SHRUB PACKETS

<u>Quantity</u>	<u>5/pkt. (cost + tax)</u>	<u>Species</u>	<u>Size</u>	<u>Age</u>	<u>Sub-Total</u>
_____	\$40/pkt. (\$37.38 + \$2.62)☒	American Chestnut *** <small>*** = 'Apparently Blight Free' with some resistance--no gene mod.</small>	18"-24"	1 - 0	_____
_____	\$15/pkt. (\$14.02 + \$ .98)☒	American Plum (Wild)	6-12"	1 - 0	_____
_____	\$15/pkt. (\$14.02 + \$ .98)☒	Bald Cypress, Common	6-12"	1 - 0	_____
_____	\$15/pkt. (\$14.02 + \$ .98)☒	Black Cherry	6-12"	1 - 0	_____
_____	\$15/pkt. (\$14.02 + \$ .98)☒	Blackhaw Viburnum	6-12"	1 - 0	_____
_____	\$15/pkt. (\$14.02 + \$ .98)☒	Downy Serviceberry	12-18"	1 - 0	_____
_____	\$15/pkt. (\$14.02 + \$ .98)☒	Paper Birch	6-12"	1 - 0	_____
_____	\$15/pkt. (\$14.02 + \$ .98)☒	Sugar Maple	6-12"	2 - 0	_____
_____	\$15/pkt. (\$14.02 + \$ .98)☒	Swamp White Oak	6-12"	1-0, 2-0	_____

## ACCESSORIES

<u>Quantity</u>	<u>100/bd. (cost + tax)</u>	<u>Description</u>	<u>Sub-Total</u>
_____	\$15/pkt. (\$14.02 + \$ .98)☒	Marking Flags (100 in bundle)	_____

**TOTAL DUE**    \$ \_\_\_\_\_

Name: \_\_\_\_\_ Phone: \_\_\_\_\_

Email: \_\_\_\_\_

Please include your email address below if you would like to receive our quarterly newsletter

**OFFICE  
USE:**

Cash / Check

Check# \_\_\_\_\_

Receipt# \_\_\_\_\_

# 2026 Brief Descriptions of Species

## **Evergreens:**

### **Canaan Fir:** *Abies intermedia*

Canaan fir is an attractive medium-sized tree generally reaching 40-55 feet in height and 20-25 feet in width. It exhibits a relatively dense, pyramidal crown with a slender spire-like tip. An important asset of Canaan fir is its ability to grow in areas not well suited to other native firs, but will not do well in heavy, wet, clay soils. In recent years, considerable interest has developed in using Canaan fir as a Christmas tree species.

### **White Pine (native):** *Pinus strobus*

The White Pine is a fast growing (2-3 ft per year or more) evergreen that has needles of from 3—6 inches long and are arranged in bundles of five on the stem. In Sep-Oct this pine “sheds “ all of its needles that grew out the previous year. It will grow to 80 feet tall by 40 feet wide or larger under optimum conditions, with a rapid growth rate. Its shape is upright pyramidal when young but becomes irregular with maturity. The White Pine performs best in evenly moist, rich, well-drained, acidic soils in full sun.

### **White Spruce:** *Picea glauca*

This non-native spruce, to 60' high and 20' wide, is more tolerant of heavier clay soils and wetness than the Norway spruce. It is slower growing than Norway spruce and has a symmetrical shape with blue-green needles. The primary benefit locally is that it will better tolerate the acidic heavy clays. It will not survive extended seasonal wetness.

## **Hardwoods/Shrubs:**

### **American Chestnut:** *Castanea dentata*

American Chestnut was predominately located in the eastern half of Ohio, where the soils are more acidic. Its nuts were a staple food of the Native Americans and pioneers, while its wood was harvested for the production of furniture, musical instruments, caskets, crates, and tannin. Dimensions of 80 feet tall by 60 feet wide were regularly obtained when it was located in the open. As a member of the Beech Family, it is related to the Oaks and the Beeches, in addition to other Chestnuts.

### **American Plum:** *Prunus americana*

Known as Wild Plum, is present throughout all of Ohio, and is native to most of the eastern and central United States. Its fruits are sweet when fully ripe, and make excellent jelly or jam due to their high pectin and high acid content. American Plum reaches 20 feet tall by 25 feet wide as an individual specimen under optimum conditions, but forms thickets of indeterminate width with time.

### **Bald Cypress:** *Taxodium distichum*

The Bald Cypress is a large, deciduous coniferous tree native to the southeastern United States. It is well-known for its adaptability to wetland environments and is the personification of a swamp tree. Bald Cypress trees prefer moist to wet soil conditions and are highly adaptable to different soil types, including loam, clay, and sandy soils. They can tolerate both full sun and partial shade, although they generally grow best in full sun. Bald Cypress trees are well-suited for planting in wetland areas, near streams, or in landscapes where moisture retention is favorable.

# 2026 Brief Descriptions of Species

## **Hardwoods/Shrubs: (cont.)**

### **Black Cherry:** *Prunus serotina*

A rapidly growing woodland tree common throughout all of Ohio, is often found in open fields and previously harvested forests. Its small fruits are relished by birds and mammals as a food source in late summer. Also known as Wild Black Cherry, this tree may grow to 60 feet tall by 30 feet wide (or larger) when it is found in an open field.

### **Blackhaw Viburnum:** *Viburnum prunifolium*

Blackhaw is perhaps the most widely distributed Viburnum in Ohio, as it is found throughout the state, ranging from shady mesic woodlands to open, dry fields. Blackhaw has plump floral buds on arching branches in winter, white flowers in mid-spring, glossy foliage in summer, and combination of colorful foliage and fruits in autumn make it a native shrub with four-season appeal. Blackhaw slowly reaches 15 feet tall by 10 feet wide when found in the open, and if limbed up into tree form, may reach 20 feet tall by 15 feet wide. As a member of the Honeysuckle Family, it is related to the Honeysuckles, Elderberries, Weigelas, and the multitude of other Viburnums.

### **Downy Serviceberry:** *Amelanchier arborea*

The white flowers of the Downy Serviceberry bloom in early spring and turn to red berries in summer that turn purple or black as they ripen. Commonly called juneberries, these edible berries can be used in jams, jellies, and pies. This large shrub/small tree reaches 15-25' in height, prefers full sun to partial shade, and is tolerant of a range of soil conditions.

### **Paper Birch:** *Betula papyrifera*

The Paper Birch tree is considered to be one of the most attractive tree species in North America. Its' handsome summer and fall foliage, graceful form and showy white bark keep this Birch species in demand for landscaping applications. Paper Birch was once used by northern Native Americans to build canoes and is also known as 'Canoe Birch'. It should not be pruned during late winter through spring due to the copious bleeding that occurs from sap rising during that time of the year. Union County would be considered to be at the southernmost range of its area of growth.

### **Sugar Maple:** *Acer saccharum*

Another Union County native, Sugar Maple can be expected to grow across Union County – except in areas of extended seasonal wetness. This maple is the most efficient at producing maple syrup. Growth habit includes a broad canopy and beautiful fall color. It prefers plenty of space and sunlight. Will tolerate shade with subsequent slower growth.

### **Swamp White Oak:** *Quercus bicolor*

If Union County had an official tree, this would be an excellent candidate. While it is tolerant of extended seasonal wetness, this white oak family tree is just as much “at home” on higher and drier sites. It is used as a tree lawn tree where space is afforded but grows anywhere adequate space will permit (Mature height 60', with a 50-60' wide crown). Swamp white oak has recently been referred to as “Bicolored Oak” in the landscape industry - taking from its scientific second name of bicolor. This reference is to the summer's glossy green leaves that are silvery white on the backside.

# Union Soil & Water Conservation District 2026 Tilapia Sale

Union Soil and Water Conservation District is now offering pond owners the opportunity to stock their ponds with Tilapia. Fish orders will be accepted until Friday, May 15, 2026. The fish will be supplied through Remlinger Fish Farm, Kalida, Ohio. Tilapia pickup will be at Union Soil & Water office at 18000 State Route 4, Marysville, OH 43040. The pickup date will be provided at a later time. All sales are final NO REFUNDS! Fish are guaranteed to arrive in good condition; however, we do not guarantee survival after you have stocked them in your pond.

## Why Should Pond Owners Stock Tilapia?

- Tilapia eat many of the common types of filamentous algae, blue green algae, chara, duckweed, watermeal, nuisance rooted aquatic vegetation. Work good with the amur which does not prefer these types of algae
- Prolific breeders, Spawn every 18 to 21 days and lay up to 1500 eggs per female
- Fish spawn when they reach 4" \ water temperature is above 68 F
- The babies are the ones that put the biggest strain on the algae by converting vegetation into a bait fish for your predator fish.
- Reduce demand on minnows and Amurs
- Increase the size and population of other fish in your pond.
- Fall temp cause fish to slow down allowing predator fish of all sizes to gorge itself just in time for winter
- Most Eco-Friendly solution to controlling algae, no more chemicals

### Union SWCD FISH ORDER FORM

<u>Species/Size</u>	<u>Price (cost + tax)</u>	<u>Amount</u>	<u>Cost</u>
Tilapia/5"-10"	\$86/a box (4lb.) (\$80.37+\$5.63)	_____	\$_____

**Name:** \_\_\_\_\_ **Phone:** \_\_\_\_\_

**Address:** \_\_\_\_\_ **Zip:** \_\_\_\_\_

**Email:** \_\_\_\_\_

**Make Checks Payable to: Union SWCD 18000 St. Rt. 4, Ste. D Marysville, OH 43040**

**OFFICE USE:** Date Paid: \_\_\_\_\_ Cash / Check # \_\_\_\_\_ Receipt # \_\_\_\_\_

# To determine how much Tilapia to stock

## Step 1 How Big Is the Pond

Formula for Circular Pond (results in acre)	Formula for Rectangular Pond (results in acre)
$(\text{Total Ft of shore line})^2$	(Length X Width)
547390	43560

## Step 2 Amount of pond Covered by aquatic vegetation?

**Little** = 1-inch layer of green, fuzzy algae shadowing the rocks

**Spotty** = small clumps of algae scattered about pond

**1 Ft Around Pond** = layer of algae, extending one foot from its edge around entire pond

**3 ft Around Pond** = layer of algae, extending three feet from its edge around entire pond

**Covered** = The pond lies ensnared beneath a relentless blanket of algae, its surface entirely obscured by the overgrowth.

Example if you had a 3/4 acer pond with 1 ft of algae around the entire pond it would take 5 order / boxes (20 lbs. of Tilapia) at a cost of \$430.00 (assume you are charging \$86 per box) These are the grey colored boxes in the chart so you can see how the charts work.

### Number of boxes required Chart (Each box contains 4 lbs. of Tilapia)

Pond Coverage	Pond Size (Acre of Water)								
	1/4	1/2	3/4	1	1 1/4	1 1/2	1 3/4	2	2 1/4
Little	1	2	2	3	4	5	6	6	7
Spotty	1	2	3	4	5	6	7	8	9
1 Ft	2	3	5	6	8	9	11	12	14
3 Ft	3	5	8	10	13	15	18	20	23
Covered	5	10	15	19	24	29	34	38	43

### End Consumer cost if charging \$86.00 per box

Pond Coverage	Pond Size (Acre of Water)								
	1/4	1/2	3/4	1	1 1/4	1 1/2	1 3/4	2	2 1/4
Little	\$86	\$172	\$172	\$258	\$344	\$430	\$516	\$516	\$602
Spotty	\$86	\$172	\$258	\$344	\$430	\$516	\$602	\$688	\$774
1 Ft	\$172	\$258	\$430	\$516	\$688	\$774	\$946	\$1032	\$1204
3 Ft	\$258	\$430	\$688	\$860	\$1118	\$1290	\$1548	\$1720	\$1978
Covered	\$430	\$860	\$1290	\$1634	\$2064	\$2494	\$2924	\$3268	\$3698

# Wild about Wildlife

Brent Nickel, Union SWCD Wildlife Specialist  
bnickel@unioncountyohio.gov

## Spring Wildlife and Habitat Interests and Concerns

### What's In Season?

[Hunting Regulations:](#)

[Fishing Regulations:](#)

"Hunting with Permission" forms and printed Hunting and Fishing Regulations are available in our office.

[The Division of Wildlife has an APP for that! Get it HERE!](#)

Get the APP and do ALL of your Division of Wildlife Business right from your phone! Don't forget to update the APP annually to keep up on the most recent regulations.

### Recommendations to PONDER

Look now for any unwanted curly-leaf pondweed, filamentous algae, duckweed, and watermeal in ponds. If there is a history of their presence, they will likely be there again... I have fact sheets available in my office that covers a wide variety of common pond problems and the potential treatments of those problems

### The GOOSE is Loose!

If you have had nuisance goose problems in the past, you are likely to have them again. Efforts to legally discourage Canada geese from nesting on properties should begin early. It takes uncommon persistence to keep them from instinctively nesting. If despite one's very best efforts, one still needs assistance, the Ohio Division of Wildlife has an online website to assist with human-Goose conflicts.

[NUISANCE GEESE](#)

**Be TICK Smart**

[Ohio.Gov/Tick](#)

Protect\*Check

\*Remove\*Watch

### Don't Forget Your Best Friend

Training and Testing seasons are upon us, and most dog related hunting seasons won't be back until early fall.

Take advantage of any local training groups and keep your best friend in shape and sharp on their skills.

Most wildlife areas are open for training and exercising now until May 1.

Dogs may not be trained or exercised on state public hunting areas May 1 through August 31, except on designated dog training areas. Training areas are located on portions of the Berlin, Caesars Creek, Delaware, East Fork, Fallsville, Indian Creek, Killdeer Plains, Lake La Su An, Oxbow, Resthaven, Rush Run, Spencer, Tri-Valley and Kokosing wildlife areas.

### Share Your Love for the Outdoors Take a Kid Fishing

Spring fishing affords many opportunities for nice catches of spring crappie, White Bass, Bluegill and larger species such as Saugeye, Walleye and Catfish. So, string up an extra pole and take a youngster with you when you head out to your favorite hole to wet a line. Teach them to tie a fishing knot, let them play in the bait box or minnow bucket, make a game of packing out litter and show them how much fun a few hours wetting a line can be. Take pictures and display them. It's amazing what kids can remember from photos. Most of all, have fun and create memories!

**Secure the future of Fishing for Tomorrow.  
Take a Kid Fishing**

**Injured or Helpless Wildlife?**

**Ohio Wildlife Center**

**614-793-WILD(9453)**

[www.ohiowildlifecenter.org](http://www.ohiowildlifecenter.org)

# Don Cook Memorial Scholarship

The Don Cook Memorial Scholarship was established in 1995, in memory of Don Cook. This scholarship allows campers to have learning experiences that will enable them to develop an appreciation for conservation and the outdoors. These were key aspects of Cook's life. Sponsored by Cook Real Estate, Dean Cook Insurance, and Union SWCD, scholarships are available for youth attending 4-H Camp.

Dave Cook, Dean Cook, and Union SWCD will sponsor (4) - \$80 Don Cook Memorial Scholarships to 4-H members attending 4-H camp @ Camp Clifton in Yellow Springs, Ohio, June 11 - 15, 2026. 1st year campers are fully sponsored in 2026, so scholarships are only available to 2nd year or beyond campers.

## **To Apply:**

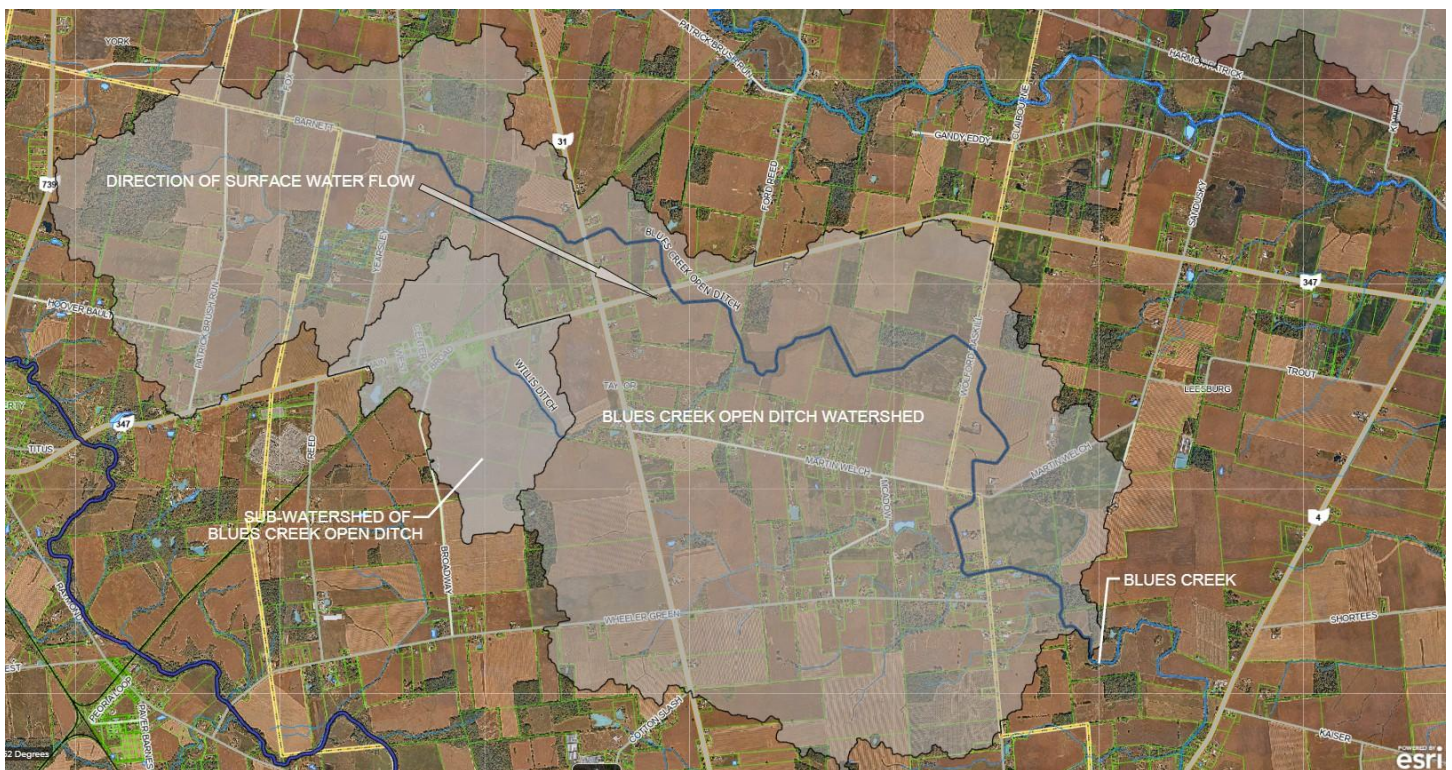
- ❖ Write a short essay. The theme for the essay is "Two Things I Plan to Do at Camp"
- ❖ Mail or drop off your essay to:  
Union Soil and Water Conservation District  
18000 St. Rt. 4, Suite D  
Marysville, OH 43040.
- ❖ Essays are due April 22, 2026
- ❖ Include contact information with your essay.  
We will notify recipients directly.\*\*

# Technical Trivia: Watersheds

Covering conservation and drainage topics on a quarterly basis.

A watershed is an area contributing direct rainwater runoff to a larger body of water. A watershed can be as large as several states or under an acre in size. All rainwater that falls in Ohio, that does not percolate or evaporate, either flows to Lake Erie or to the Ohio River. The water in the Ohio River eventually flows into the Mississippi River and then to the Gulf of America. Protecting smaller upstream watersheds is not only important for clean local water, but it is also vital to all downstream life as well.

In the example in the picture below, you can see that the Blues Creek Open Ditch Watershed drains into Blues Creek. If you look closer, you will see that the Willis Ditch Watershed is nested in the Blues Creek Open Ditch Watershed. If pollution occurs in the Willis Ditch, it has the potential to make it to Blues Creek and beyond. Keep in mind that excess sediment, while not considered pollution, can have detrimental effects on downstream areas. One of the many old adages that comes to mind is that “water runs downhill,” and we should all strive to keep it as clean as possible.



If you have questions or want to learn more, feel free to contact us!

# Conservation News

## **Interested in being a Board member and serving Union County?**

The Union Soil and Water Conservation District Nominating Committee is currently seeking eligible individuals interested in learning more about the role of a SWCD board member. SWCD Board members are Ohio public officials elected at a special election as prescribed by [ORC 940](#).

The Board of Supervisors is responsible for the leadership role in developing and implementing all short and long-term goals for the SWCD. Some of the duties of the locally led board include identifying local conservation needs and developing, implementing, and evaluating strategic plans and programs to meet them; educating and informing landowners, operators, the general public, and legislators on conservation issues; and coordinating assistance and funding from federal, state, and local government, district association, and private groups.

Board members should have a sincere interest in conservation and must have the enthusiasm, dedication, and time to serve as an elected official.

### **What a potential supervisor needs to know:**

- ❖ Candidate must be over 18 years old and a resident of Union County.
- ❖ This is a volunteer position and runs for a 3-year term.
- ❖ Board meetings are on the 2nd Thursday of the month @ 6:00 p.m.
- ❖ Attendance at occasional outside meetings and events is required.
- ❖ Click link to view the [SWCD Board Supervisor Position Description](#)

For more information, contact the USWCD District office at (937) 642-5871 Ext. 4 or email Sherry Maisenbacher at [smaisenbacher@unioncountyohio.gov](mailto:smaisenbacher@unioncountyohio.gov).

The USWCD 80th Annual Banquet and Election is planned for August 12, 2026, at Der Dutchman Restaurant in Plain City, Ohio.

# Drainage Maintenance Update

Drainage maintenance crews will be mowing the northern ditches and spraying the southern ditches this year. Maintenance crews will also be performing the annual inspections on the maintained ditches and subdivisions. If you have any questions, don't hesitate to contact the Union Soil and Water Conservation District office.

## Mill creek Logjam update

H&H Land Clearing has begun the second phase of the Mill Creek logjam removal project. H&H will begin at the Delaware county line and head upstream towards Logan county, cutting the dead standing trees from the top twenty-five feet of the bank. Field staff will be out marking trees to be cut and removed.



If you have any drainage-related questions, contact our office  
Monday - Friday from 8:00 a.m. - 4:30 p.m.

Joe Eads, Drainage Maintenance Supervisor  
18000 State Route 4, Ste. D, Marysville, OH 43040  
Email: [jeads@unioncountyohio.gov](mailto:jeads@unioncountyohio.gov)  
Ph: 937-209-2236

[www.unioncountyohio.gov/USWCD](http://www.unioncountyohio.gov/USWCD)

# Union Soil and Water Conservation District

Serving Union County's Conservation needs for 80 years

## 2025 Annual Report

*Our Mission is to promote, preserve, and enhance the wise use of our natural resources for the people of Union County by providing technical, financial and educational assistance.*

The Union SWCD was formed in 1945, the 47th District in Ohio, for the purpose of planning and carrying out natural resources conservation programs. The District is a political subdivision of the State of Ohio and is governed by a board of five supervisors, elected by the landowners of Union County, who serve staggered three-year terms. The supervisors donate their time to serve Union County landowners.

Monthly board meetings of the Union SWCD Board of Supervisors are held on the 2nd Thursday of each month to conduct business. All meetings are open to the public and held on the second Thursday of the month at 6:00 p.m.

### 2025 Board of Supervisors

**Rick Weigand, Chair**

**Andy Clarridge, Vice-Chairman**

**Cheryl Trivisonno, Fiscal Agent/Treasurer**

**Larry Morris, Secretary**

**Randy Trapp, Member**

### 2025 Union SWCD Operating Funds

The Union Soil and Water Conservation District operates on funding provided by the Union County Commissioners, the Union County Township Trustees and matching funds from the Ohio Department of Agriculture, Division of Soil & Water Resources.

**Local Funds:**

Union County Commissioners	\$400,000.00
Township Trustees	\$ 1,200.00

**Other Sources:**

State Matching Funds	\$301,660.00
ODNR Wildlife Specialist Grant	\$ 22,000.00

## Annual Meeting & Election

The Union Soil and Water Conservation District held its 80th Annual Meeting on Wednesday, August 13, 2025, at the Der Dutchman Restaurant at 445 South Jefferson Avenue, Plain City, Ohio. There were 66 people in attendance.

The election for two Supervisors was held, and the candidates, Andy Clarridge and Cheryl Trivisonno, were elected for a three-year term to begin January 1, 2026

Entertainment: Amanda Badger of Wild Hearts African Farm brought several animals to share with the group. Animals included Box Turtle, Blue-tongued Skink, Hedgehog, Millipede, Lionhead rabbit, and a Barn Owl.

### Associate Supervisors

Bill Conklin      Jay Rausch      Jim Mitchell      Joe Wiley  
Matt Furer      Matt Staley      Steve Drumm      Suzi Clarridge

### District Staff

Brent Nickel, District Administrator/Wildlife Specialist  
Sherry Maisenbacher, Administrative Assistant  
Mark Watkins, District Technician  
Ross Carter, District Technician  
Matt Williams, District Technician  
Emma Scott, Urban Technician  
Joe Eads, Drainage Maintenance Supervisor  
Matt Archer, Drainage maintenance Technician  
Cody Beery, Drainage maintenance Technician

### USDA, NRCS Staff

Ron Neiman, District Conservationist  
LaRae Baker, Resource Conservationist  
Adam Slappy, Soil Conservationist  
Mariah Lashley, Soil Conservationist  
Sierah Geldbaugh, Soil Conservationist  
Brent Smith, ACES

### Pheasants Forever

Riley Porter, Farm Bill Wildlife Biologist II

## **Conservation Products**

- **Rentals:** No-till drill was rented out (11) times for a total of 515.5 acres  
Straw blower was rented out (3) times.  
Tree Planter was rented out (1) time.  
Tree Puller was rented out (0) time.
- **Tree Sale:** Union SWCD 2025 Tree Sale was held as a drive-thru on April 26, 2025, with 4,495 seedlings available to 135 customers.
- **Fish Sale:** Union SWCD 2025 Fish Sale was held on October 8, 2025, and we sold 10,971 fingerlings to 20 customers.

## **Education**

- **School Presentations:** Presented the Groundwater Simulator and the Enviroscape modules to Fairbanks Middle School, North Union Middle School, North Union High School, Trinity Lutheran and at an event held at Dutch Mill Green House. Read The Lorax to the first graders at North Union on Earth Day.
- The Enviroscape modules, Groundwater Simulator, and the AR Sand table were made available to Union County teachers upon request to use in their classrooms.
- **National Hunting & Fishing Day:**  
Assisted with 100+ participants
- **Hunting & Fishing Education:**  
Assisted with - 5 classes for over 250+ participants
- **Pheasants Forever Archery Trailer:**  
3 Events and 600+ participants
- **Pheasants Forever Youth & Ladies Shoot and Hunt:**  
2 Events and 75+ participants
- **Conservation Tillage Club Breakfasts:**  
(4) Conservation Tillage Club breakfasts were held in 2025 at the Mid-Ohio Energy, 1210 W. Lima St., Kenton, OH with (162) people attending.

## **Outreach**

- Don Cook Memorial Scholarship: Cook Real Estate, Dean Cook Nationwide Insurance, and Union Soil & Water sponsored Alexa Brinson, Gabe Davis, Nevaeh Phillips, and Sadie Clevenger to attend 4-H Camp at Camp Clifton.
- Provide an Ohio Woodland Journal Subscription to Fairbanks, Marysville and North Union High Schools.
- Participated in the Richwood Independent Fair and provided educational displays.
- Union SWCD Website: Provided announcements, events, quarterly newsletters, and conservation and drainage information to the public. <https://www.unioncountyohio.gov/USWCD>
- District Facebook Page: Provided announcements, events, conservation, and drainage information to the public

## **Drainage Maintenance**

- Ditches: (39) Maintained with 62.59 miles of ditches by spraying (southern ditches) and mowing (northern ditches)
- Subdivisions: (40) maintained with 16.58 miles of subsurface drainpipe along agriculture drainage systems, (126) urban subdivision retention basins, and (199) concrete drainage structures, which included headwalls, manholes, and catch basins, and (40) projects are pending, awaiting the final punch-outs.
- Petition Project
  - Mill Creek Logjam project has resulted in the removal of 1,650 log jams and 3,000 trees.
  - Mackan Ditch (pending) preparing preliminary plans
- Subdivision Plat Reviews: Reviewed (42) subdivision plats.
- Assessment Spreadsheets: Maintained (80) spreadsheets.

## **Technical Assistance**

The following are some of our technical accomplishments of the past year:

- Agricultural Conservation Easement Program (ACEP): Completed (4) Inspections
- Agricultural Pollution Abatement Program (APAP): Investigated (6) Complaints
- CRP-MCM Assessment/Review: (37) Field Visits and Landowner Meetings
- Grassed Waterways: Assisted (39) landowners designing/planning
- Local Agricultural Easement Purchase Program (LAEPP): Assisted (5) landowners
- Pond Management: Provided assistance to (9) pond owners.
- Pond Site Evaluations and Planning: Assisted (4) residents
- Drainage Assistance: Assisted (44) landowners with erosion, sediment, stormwater control and management
- Ohio Agriculture Conservation Initiative (OACI): Assisted (13) landowners
- H2Ohio Clean Water Initiative: Assisted (19) with VNMP and P2
- Agricultural Subsurface Drainage: Designed for (3) landowners
- Drainage Maintenance Projects:
  - Maintained Ditches (repairs): Blues Creek; Duns Run; Elliott Run; Prairie Run; Leo Rausch Sugar Run; Rocky Fork; Sugar Run; Tobey Run; Lower Green Joint; and Clark Yoder
  - Maintained subdivisions (repairs): Darby Braeside; Mitchell Highlands; New Cali. H/W ex. 6, 7, 10; JV - ERN01, ERN02, ERN06, GPN08, and GPN12; Pioneer Crossing Phase 1
  - Pending Projects:
    - Ditches* – Mackan, Farrington, Lincoln, and Wenrick
    - Subdivisions* - Avondale, Jerome Professional Park, Jerome Village Market, and Memorial Jerome Medical Center
- Solar Projects: Acciona/Union; Invenergy/Cadence, and Samsung/Richwood

## **Urban Conservation**

Memorandums of Understanding (MOU) Townships: We have agreements to provide technical assistance on soils and drainage for all new home sites. In addition to home site inspections, the following townships require a zoning permit for ponds as well:

Darby Township Trustees

Dover Township Trustees

Leesburg Township Trustees

Liberty Township Trustees

Millcreek Township Trustees

Paris Township Trustees

Union Township Trustees

York Township Trustees

Home Site Reviews: (57) Home site visits to determine proper lot drainage for new homes were performed, and (2) construction site for sediment and erosion control BMPs.

Be the Change for Clean Water Partner: The Be the Change initiative exists to keep you informed about programs and services in Central Ohio & how they can benefit you! When it comes to protecting our water resources, we all need to be part of the solution. Be The Change for Clean Water is bringing together ten counties and a multitude of partners to provide education, resources, and opportunities, making it easier for all Central Ohio residents to Be the Change for Clean Water.

<http://www.bethechangeforcleanwater.org>

Drainage Complaints/Investigations/Information: (44) incidents were addressed

## **Wildlife Assistance**

Wildlife Conflict/Damage Investigations (15):

Bagworms, Bats, Beaver, Bees, Caterpillars, Coyote, Fox, Feral Cats, Geese, Hawks, Muskrats, Raccoons, Groundhogs, Woodpeckers, Blackbirds/ Starlings, Squirrels/ chipmunks, Rabbits, Swans, and Turtles.

Wildlife Assistance (40):

Provided assistance to a variety of individuals concerning pheasant rearing, wildlife rescue information, "orphaned wildlife", wildlife exclusion methods, habitat, muskrat/dike damage, wildlife conflict/nuisance investigations, Nuisance Trapper Lists, plant ID, etc.

Wildlife Habitat Assistance (43):

Landowner discussions for field management/contract requirements. Assist landowners with Native Plant IDs.

**Union SWCD Board of Supervisors would like to thank all  
the Partners, Funders, Sponsors and Supporters**

**2025 Supporters**

Union County Commissioners

Union County Engineer

Union County Auditor

Union County Treasurer

Union County Health Department.

City of Marysville

UC Chapter of Pheasants Forever Chapter #535

Union County Farm Bureau

OSU Extension

USDA Farm Service Agency

Union County Ag Association

Darby Township Trustees

National Association of Conservation Districts

ODNR Division of Forestry

ODNR Division of Wildlife

ODA Division of Soil & Water Conservation

Ohio Soil & Water Conservation Commission

Ohio Federation of Soil & Water Conservation Districts

## 2025 Affiliate Members

Cook Real Estate (Gold Member)	61 years
Ag-Pro Richwood (formerly Parrott Implement Co.)	57 years
Ohigro Inc. (Silver Member)	52 years
MJS Oil, Inc., dba Smith Distributing (Silver Member)	38 years
Dean Cook Nationwide Insurance (Gold Member)	33 years
Union County Farm Bureau (Gold Member)	28 years
Smart Oil, LLC (Gold Member)	12 years
Millcreek Gardens LLC (Silver Member)	6 years
Vititoe Construction, Inc. (Platinum Member)	6 years
Connolly Construction Co. (Silver Member)	5 years
MitchellAgri (Gold Member)	5 years
The Seed Center (Gold Member)	5 years
Benny's Pizza (Gold Member)	4 years
Bokes Creek Orchard (Gold Member)	4 years
Richwood Tire Center (Silver Member)	4 years
Steve Stolte (Gold Member)	4 years
Heart of Ohio Fish & Game Association (Gold Member)	3 years
Bahan Excavating LLC	2 years
Gravatt Family Farm	2 years
Burrey Aquatic Restoration LLC	1 year
Sheely Ag Services, LLC	1 year

# 39th Annual Fish Sale

**Order Deadline: September 28, 2026**

**Union Soil and Water Conservation District Pick Up Date: October 8, 2026, at 2:00**

Union SWCD is accepting orders for our annual fall fish sale. Fish are sourced from Remlinger Fish Farm in Kalida, Ohio. Orders are taken on a per unit basis and will arrive pre-boxed ready for pickup. If you have a large order, please be sure to drive a vehicle that will accommodate your order. All sales are final. **NO REFUNDS!** Fish are guaranteed to arrive in good condition; however, we do not guarantee survival after you have stocked them in your pond. **We accept Cash or Checks only for payment.**

**Name:** \_\_\_\_\_ **Phone:** \_\_\_\_\_

**Address:** \_\_\_\_\_ **Zip:** \_\_\_\_\_

**Email:** \_\_\_\_\_

SIZE	SPECIES	UNIT			ORDER	TOTAL
		Qty.	Cost	(+ tax)		
2" - 4"	<b>Bluegill</b> (popular panfish)	25	\$33.00	(\$30.84+\$2.16)	-	-
4" - 6"	<b>Bluegill</b> (popular panfish)	20	\$50.00	(\$46.73+\$3.27)	-	-
2" - 4"	<b>Hybrid Bluegill</b> (popular sport panfish)	25	\$33.00	(\$30.84+\$2.16)	-	-
4" - 6"	<b>Hybrid Bluegill</b> (popular sport panfish)	20	\$50.00	(\$46.73+\$3.27)	-	-
2" - 3.5"	<b>Redear Shellcracker</b> (preys on mollusks and snails)	25	\$42.00	(\$41.12+\$2.88)	-	-
3.5" - 5.5"	<b>Redear Shellcracker</b> (preys on mollusks and snails)	20	\$52.00	(\$56.07+\$3.93)	-	-
2" - 4"	<b>Black Crappie</b> (popular panfish species)	25	\$53.00	(\$48.60+\$3.40)	-	-
4" - 6"	<b>Channel Catfish</b> (preys on crayfish, insects, & small fish)	25	\$36.00	(\$33.40+\$2.36)	-	-
4" - 6"	<b>Jumbo Yellow Perch</b> (popular gamefish)	20	\$56.00	(\$56.07+\$3.93)	-	-
6" - 8"	<b>Jumbo Yellow Perch</b> (popular gamefish)	10	\$51.00	(\$44.86+\$3.14)	-	-
8" - 10"	<b>Jumbo Yellow Perch</b> (popular gamefish)	5	\$45.00	(\$44.86+\$3.14)	-	-
2" - 4"	<b>Large Mouth Bass</b> (popular predator fish)	25	\$52.00	(\$46.73+\$3.27)	-	-
4" - 6"	<b>Large Mouth Bass</b> (popular predator fish)	20	\$66.00	(\$56.07+\$3.93)	-	-
6" - 8"	<b>Large Mouth Bass</b> (popular predator fish)	10	\$55.00	(\$52.34+\$3.66)	-	-
8" - 10"	<b>Large Mouth Bass</b> (popular predator fish)	5	\$56.00	(\$56.07+\$3.93)	-	-
8" - 12"	<b>White Amur</b> (used to control aquatic plants)	2	\$43.00	(\$37.38+\$2.62)	-	-
1" - 3"	<b>Black Fathead Minnow</b> (feeder fish)	500	\$52.00	(\$46.73+\$3.27)	-	-
					<b>TOTAL \$</b>	_____

**Make Checks Payable to: Union SWCD 18000 St. Rt. 4, Ste. D Marysville, OH 43040**

OFFICE USE: Date Paid: \_\_\_\_\_

Cash / Check # \_\_\_\_\_

Receipt # \_\_\_\_\_

# Fish Descriptions

## **Bluegill**

Bluegill feed almost exclusively on insects and will also eat commercial fish food. Bluegills begin to spawn in late spring and will spawn 3-4 times throughout the summer. These spawns are primarily used as a forage base for predators, such as large-mouth bass. One year old fish range in size from 1 - 4 inches and become sexually mature between 4 - 5 inches.

## **Hybrid Bluegill**

Hybrid bluegill is a are a cross between a green sunfish and a bluegill. They grow faster than regular bluegill. They will also eat commercial food. Their spawning habits are like the bluegill however they produce less eggs. One year old range in size from 3 - 8 inches. They become sexually mature at 4 - 5 inches.

## **Black Crappie**

Crappie prefer cover, such as vegetation, fallen trees or boulders. They often form in large groups, called schools, in clear water among vegetation over mud or sand. They inhabit quiet, warm temperate waters; usually associated with abundant aquatic vegetation and sandy to muddy bottoms. The common length for black crappie is 10.8 inches and the maximum reported length for a black crappie is 19.3 inches

## **Channel Catfish**

Channel Catfish are scavengers that will eat almost anything and are primarily found at the bottom of a pond or lake. They will easily take to commercial feed which results in tremendous growth. They generally do not reproduce in ponds due to inadequate spawning structure. Suitable structures are buckets or drain tiles place in 3 - 4 foot water depths.

## **Fathead Minnow**

Black Fathead Minnows are added to ponds as a source of food for other species. They can spawn many times throughout the spring and summer. The use of stacked pallets and trees can create spawning habitats. One year olds range in size from .5 - 3 inches and become sexually mature at 1 - 3 inches. Restocking is necessary if none are visible in pond.

## **Large Mouth Bass**

Large Mouth Bass, one of the most prized game fish, do not readily feed on commercial fish food. They eat insects, tadpoles, minnows and other small fish. They spawn in 2 - 4 feet of water at temperatures near 60 degrees. One year old fish range in size between 3 - 7 inches and become sexually mature at 10 - 12 inches.

## **Redear Shellcracker**

The redear sunfish nicknamed the Shellcracker, is a member of the sunfish family and similar to the bluegill. It feeds almost exclusively on mollusks. These are fast growing and fun to catch. They reproduce one time a year therefore they will not overpopulate a pond. One year olds range from 1 - 4 inches and become sexually mature between 5 - 9 inches.

## **White Amur**

White Amur, or the Grass Carp, is a cost effective, natural alternative for weed control in ponds. The use of amur in place of chemical applications is more environmentally friendly. Once an amur reaches maturity it consumes less, therefore 20% of the original stocking should be added annually. They can eat up to 3 times its body weight per day. These fish are sterile due to government regulations to avoid overpopulation.

## **Yellow Perch**

Yellow Perch is sought after for the good tasting filets. Their primary food is zoo plankton, insects, snails and small fish. They are considered prey rather than predators. Reproduction occurs on tree-like structures in water depths of 1 - 6 feet. One year old fish range in size from 1 - 4 inches and become sexually mature at 5 - 12 inches.

# Union SWCD Affiliate Member Application

[www.unioncountyohio.gov/departments/USWCD/affiliate-members--donors](http://www.unioncountyohio.gov/departments/USWCD/affiliate-members--donors)

Affiliate membership dollars are used to help contribute to a variety of natural resource education efforts for Union County residents. Such efforts include field days, pond clinics, displays, tours, camp scholarships and presentations to schools and civic groups.

## Membership Benefits

Annual Meeting Tickets	Listed in our Annual Meeting Program
Listed in our Annual Report	Listed on our website
Listed in our quarterly newsletter	Listed on the Annual Meeting PowerPoint

### Please complete the form below:

Business Name: \_\_\_\_\_

Contact Name: \_\_\_\_\_

Address: \_\_\_\_\_

Email: \_\_\_\_\_ Phone: \_\_\_\_\_

Website: \_\_\_\_\_

### Choose one of the following Affiliate memberships available:

_____ Diamond Membership	\$500 or more
_____ Platinum Membership	\$250 - \$499
_____ Gold Membership	\$100 - \$249
_____ Silver Membership	\$50 - \$99

Send this form along with a check payable to: Union SWCD  
18000 State Route 4, Suite D  
Maryville, OH 43040

If you have any questions, contact Sherry Maisenbacher at (937) 642-5871 x2221  
or [smaisenbacher@unioncountyohio.gov](mailto:smaisenbacher@unioncountyohio.gov)

# Upcoming Events / Office Closures

April 9, 2026	USWCD Board Mtg.: 6:00 p.m., in the Buckeye Mtg. Room
April 18, 2026	USWCD Annual Tree Sale, 9:00 a.m. - Noon or until SOLD OUT
May 14, 2026	USWCD Board Mtg. 6:00 p.m., in the Buckeye Mtg. Room
May 15, 2026	USWCD Tilapia Sale ORDER DEADLINE
May 25, 2026	Holiday: USWCD Office CLOSED to observe Memorial Day
June 11, 2026	USWCD Board Mtg.: 6:00 p.m., in the Buckeye Mtg. Room
June 19, 2026	Holiday: USWCD Office CLOSED to observe Juneteenth
July 3, 2026	Holiday: USWCD Office CLOSED to observe Independence Day
July 9, 2026	USWCD Board Mtg.: 6:00 p.m., in the Buckeye Mtg. Room
August 12, 2026	USWCD Board Mtg.: 5:00 p.m., at the Der Dutchman Restaurant in Plain City
August 12, 2026	USWCD 80th Annual Mtg.: 5:45 p.m. Election and 6:30 p.m. Meal, at Der Dutchman Restaurant in Plain City, OH.

## 2026 Affiliate Members

[www.unioncountyohio.gov/departments/USWCD/affiliate-members--donors](http://www.unioncountyohio.gov/departments/USWCD/affiliate-members--donors)

### **Diamond Member**

Bahan Excavating LLC

### **Gold Members**

Ag-Pro Richwood

Connolly Companies

Cook Real Estate

Dean Cook Nationwide Insurance

Gravatt Farms

MitchellAgri, Inc.

Seed Consultants

Smart Oil, LLC

Steve Stolte

### **Silver Member**

Richwood Tire Center